

Applicant Pack



Thank you for your interest in the CMI. The aim of this pack is to provide you with an understanding of CMI.

More information can be found on our website at www.managers.org.uk.





Contents Page

Brand Positioning Framework	02
CMI History	03
CMI Organisation Chart	04
Staff Benefits	05
Location	06
Contact Us	07

Our vision

Better led and better managed organisations

Our mission

Increasing the number and standard of professionally qualified managers and leaders

- Encourage and support the lifelong development of managers
- Raise the level of competence and percentage of managers with qualifications
- Initiate, develop, evaluate and disseminate management thinking, tools, techniques and practices
- Influence employers, policy makers and opinion formers on management issues.

Our values

- **Passionate**
We are passionate about managers and leaders making an impact
- **Savvy**
Our accumulated knowledge and expertise make us smart and quick to respond
- **Progressive**
We look forward and believe that things can be done better
- **Challenging**
We challenge the status quo so that our members and customers get better answers and solutions
- **Professional**
We have high standards and adhere to our code of conduct and practice

Positioning

The only chartered professional body dedicated to raising standards of management and leadership across all sectors by setting professional management standards – built into our *qualifications, membership criteria and learning resources* – enabling us to recognise individual capability and give employers confidence in their managers' performance.

Outcome

Improved personal and corporate performance, national productivity and social well being



Let's start at the beginning

Others come and go, but the CMI has been backing professional managers for more than 60 years. And the reason we have stood the test of time is we have got our eye on the ball.

Our ability to understand managers' needs was evident from the start in the 1950s when we developed the UK's first diploma in management studies. We have continued to be at the forefront of management training.

And just as an advocate should, we have pushed the cause for professionalising management ever since.

So it is no wonder that CMI now sets the UK's standards for management and leadership.

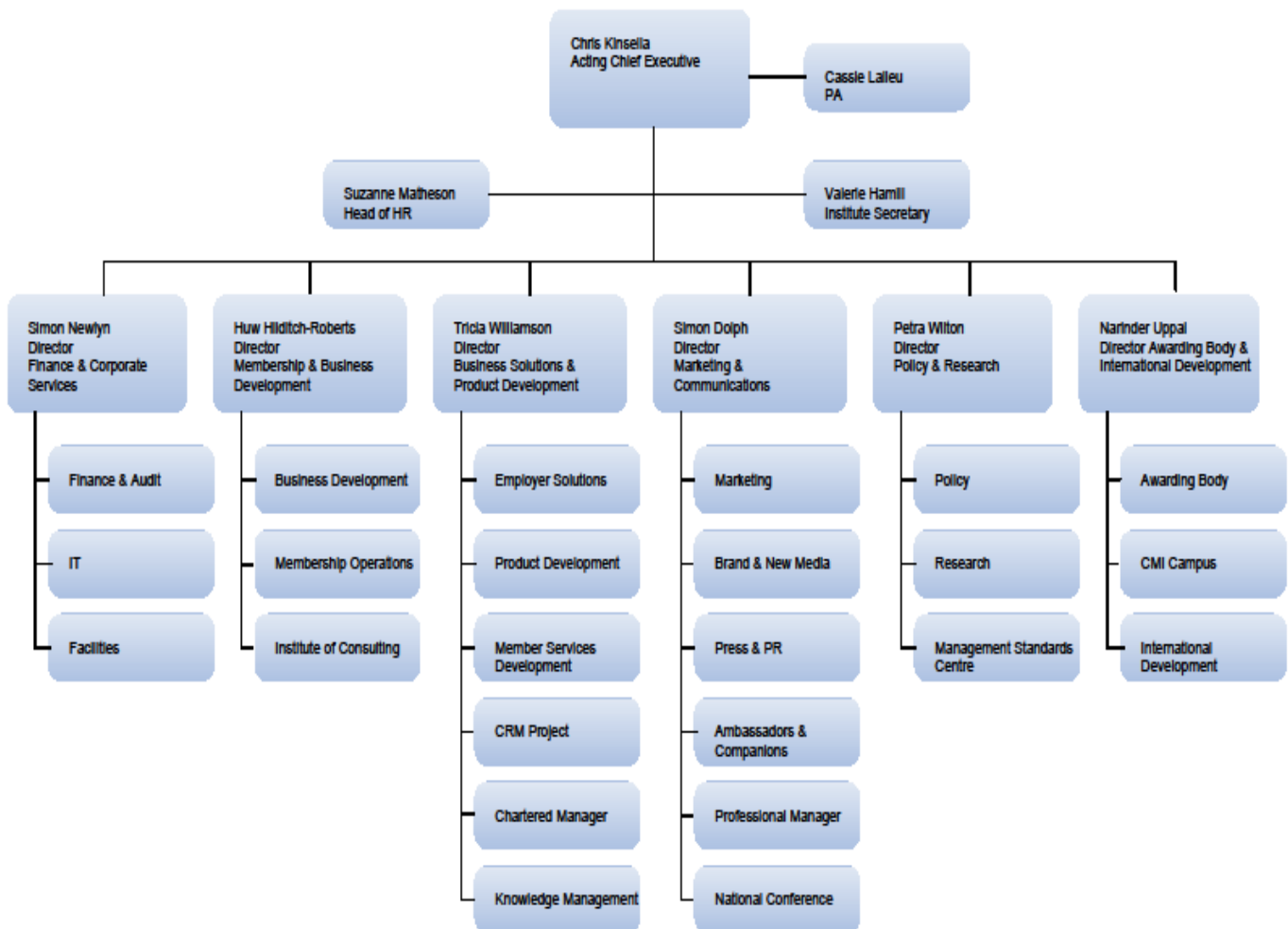
Not surprising, CMI has had a few names in the past beginning with the British Institute of Management to the Institute of Management in the 1990s.

In 2002, our excellence was recognised with Chartered Status. So these days we are best known simply as CMI.

Think of it as a kite mark for quality. We do.



CMI Organisation Chart

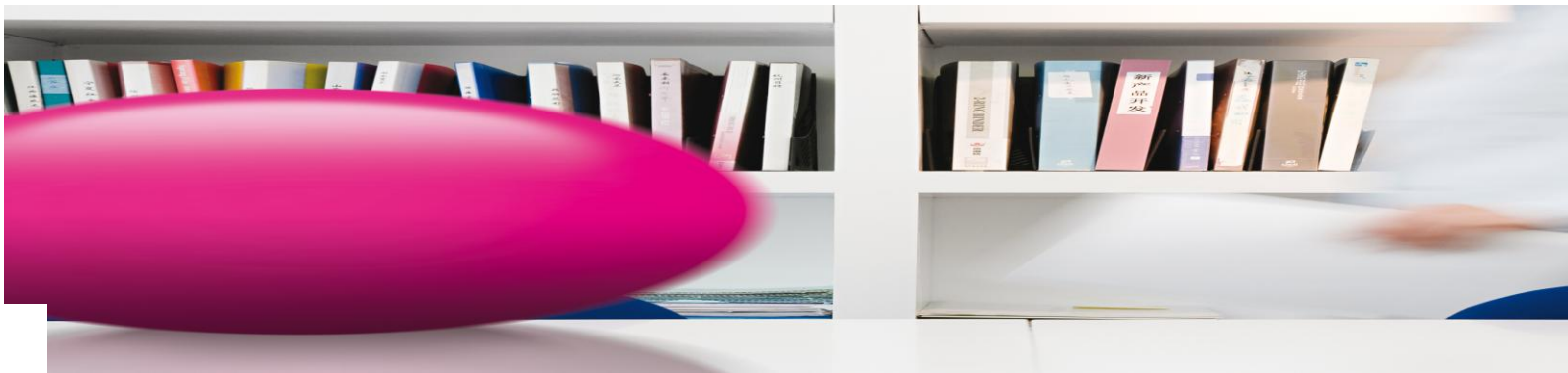


Working at CMI

CMI currently has over 130 employees that are separated under different directorates.

The CMI is an equal opportunities employer and employs people based on their ability to carry out the task.

The majority of our staff are based at our Head Office in Corby, Northamptonshire. We also have a Registered Office in Savoy Court in Central London. Additionally we have a number of our staff in Membership and Business Development who are field based and work from home covering the whole of the UK.



Current staff Benefits

CMI offers a range of staff benefits which include

- 20 days paid annual leave (pro rata for part time staff) increasing up to a maximum of 30 days bas on length of service, excluding bank holidays
- 8 Bank Holidays plus 4½ CMI holidays at Christmas

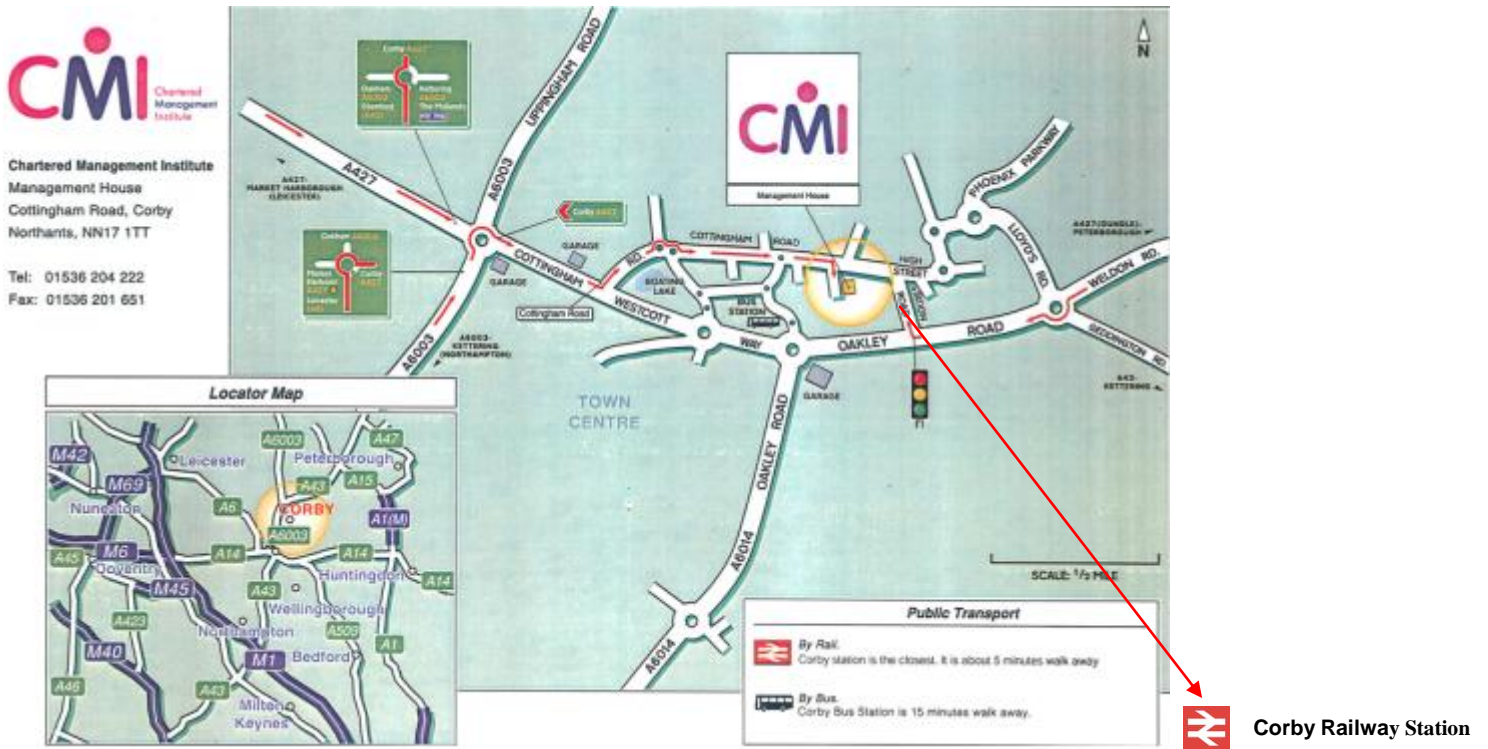
- Salary Sacrifice Stakeholder Pension scheme
- Free life assurance
- Free Permanent health insurance
- Free accident insurance
- Sickness Benefits scheme
- 35 hour working week
- Enhanced maternity and paternity package
- Reimbursement of professional membership fees (our own Institute plus one other)
- Childcare Vouchers
- Simplyhealth Cash Plan
- Cycle to work scheme*
- Employee Personal Computer Incentive Scheme*
- Buy and Sell Holidays
- High Street Discounts
- Total Reward Statement
- Employee Assistance Programme
- Private medical insurance *
- Interest free season ticket loan*
- Travel Insurance*
- Childbirth benefit*
- Mobile phone *
- Company car*
- Long service award*
- Access to an occupational health advisor
- Subsidised catering facilities*
- Free car parking (Management House only)

*Certain conditions apply on benefits. Details are available from the HR department. Some benefits are non-contractual and the Institute reserves the right to review and withdraw benefits as appropriate.



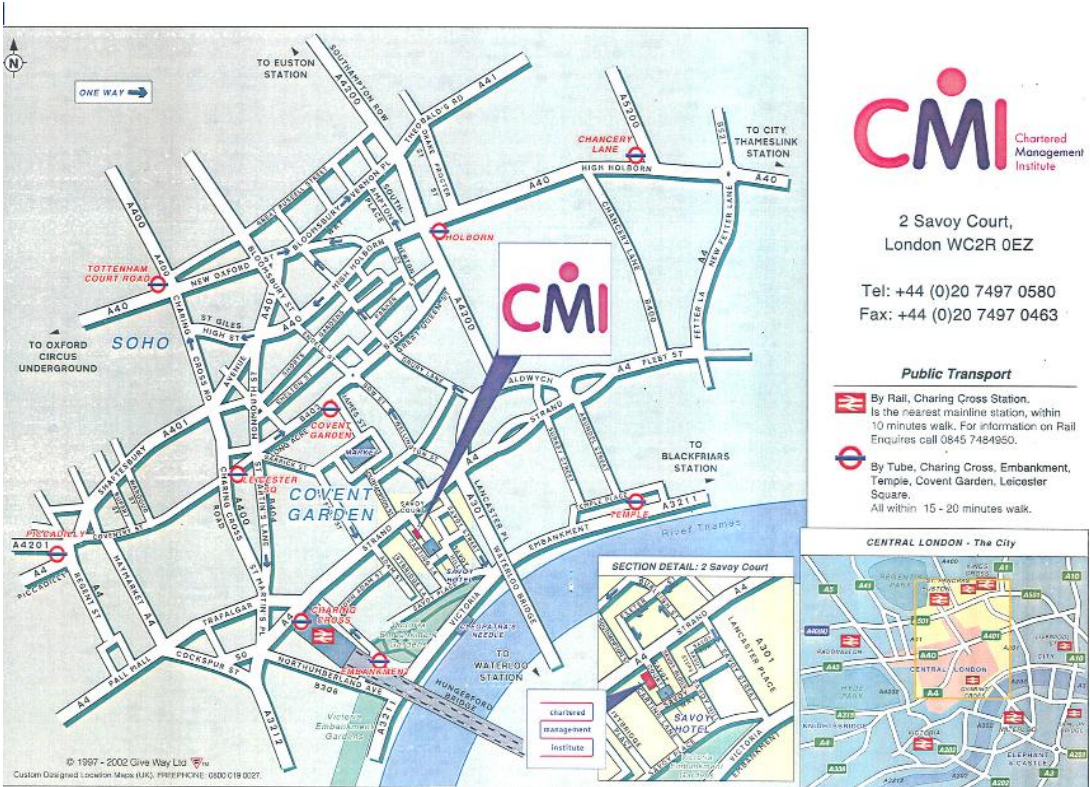
Locations

Our office situated in Corby is set in 5 acres of ground where we have ample free car parking facilities. We are 10 minutes walk away from Corby town centre where there are a variety of shops, banks, post office and coffee shops. The nearest retail park is approx. 15 minutes walk where you can find Asda, sport shops, fashion retailers, and a shoe shop.



Our nearest railway station is Corby but there are also direct trains from London to Kettering where there is also a bus link (approx half an hour) from Kettering to Corby town centre.

Our London office is centrally located. Savoy Court is just 10 minutes walk from either Covent Garden or Charing Cross station.





Contact Us

HR Department
CMI
Management House
Corby
Northants
NN17 1TT

Email: hr@managers.org.uk

Telephone: 01536 207284.



CMI, Management House, Cottingham Road
Corby, Northamptonshire NN17 1TT
Tel: +44 (0)1536 204 222,
Fax: +44 (0)1536 201 651
www.managers.org.uk