

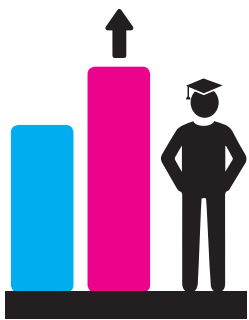


MAKING AN IMPACT.

Higher education partnerships that deliver results.

CMI Dual Accredited degrees provide students with a positive learning journey: attracting a diverse range of students, supporting HE partners to deliver enhanced learning experience, equipping students with the skills that employers require and boosting graduates' employability.

CMI ACCREDITATION BOOSTS EMPLOYABILITY



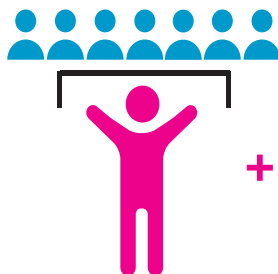
+10%
vs. non-accredited
business courses

after 6 months, **58%** of graduates
from CMI accredited courses were in
professional roles, compared with **48%**
from non-accredited business courses.



81%

of students agree they are
developing the skills to make
them more employable.



+7%

CMI accredited courses saw a 7%
point uplift of employability into
professional roles since 2015.



**9 out
of 10**

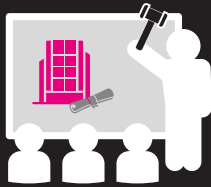
HE partners say that CMI
has a high level of impact on
student employability.

"I truly believe that my decision to study a CMI accredited degree was instrumental in helping me to secure my first role...I was looking for a course that would offer me something that would help me stand out to employers - and that is exactly what I found."

Danielle Keeling ACMI, Personal Tax Assistant, EY

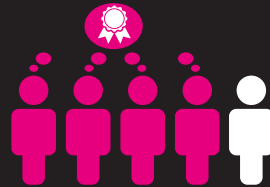
For more information or to download the document please go to
<https://www.managers.org.uk/hepartners> and join the conversation
[@cmi_managers](#) [#bettermanagers](#)

CMI ACCREDITATION IS INFLUENTIAL IN STUDENT RECRUITMENT



84%

of 1st year students say that CMI accreditation influenced their decision to apply for their course, when they were aware of CMI.



4 out of 5

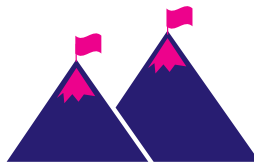
HE partners say that a partnership with CMI has had a high level of impact on student recruitment.

ENHANCING STUDENT EXPERIENCE



83%

satisfaction rating with CMI accredited courses from the National Student Survey.



69%

of students say CMI resources gave them the confidence to tackle academic and employment challenges.



97%

of HE partners say CMI has had a positive impact on students learning experience.

“Those students who embrace CMI have the opportunity for extensive networking and knowledge acquisition way beyond the classroom scenario and this can only be of benefit when they are applying for graduate positions.”

Christine Harrop-Griffiths, Programme Lead, University of Derby

CMI ACCREDITATION DEVELOPS KEY MANAGEMENT AND LEADERSHIP SKILLS



3 in 5

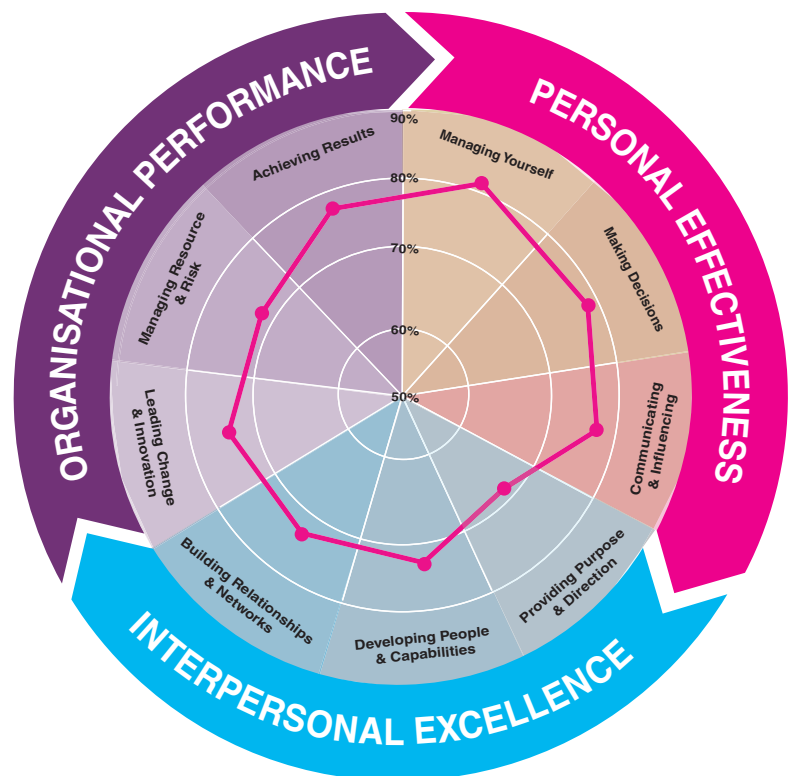
employers say they expect graduates to have practical management and leadership skills.

Key skills acquired by students on CMI accredited courses include:

81% acquired skills to manage themselves.

74% acquired skills to lead change and innovation.

73% acquired skills to develop people and capabilities.



CMI Professional Standard
% of students acquiring skills

For more information or to download the document please go to <https://www.managers.org.uk/hepartners> and join the conversation @cmi_managers #bettermanagers