



# IMPROVING STUDENT OUTCOMES.

Partnering with CMI to deliver TEF requirements.

The benefits of CMI's HE Partnerships link directly to the Teaching Excellence Framework (TEF) criteria. Find out how partnering with CMI can make a positive contribution to teaching quality, learning environment, and student outcomes and learning gain.

## TEACHING OUTCOMES



**97%**

of HE partners say their CMI partnership has a positive impact on student achievement.



**+41**

CMI's net promoter score indicates a high level of student satisfaction.

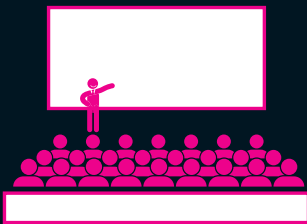


CMI's net promoter score indicates a high level of HE partner satisfaction.



CMI's dual accreditation meets employer needs and PSRB\* accreditation criteria.

## LEARNING ENVIRONMENT



**97%**

of HE partners say their CMI partnership has a positive impact on students' learning experience.



**49%**

of students say that a CMI qualification improved their learning experience whilst at University.



Over **50%** of students use CMI resources to support their studies.

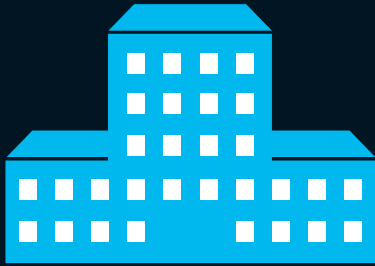
*"I'll have a CMI accreditation after I graduate. This really adds credibility to my degree and it's definitely something I've been able to talk about in interviews."*

Victoria Stace, Fashion Management, London College of Fashion

\*Professional, Statutory and Regulatory Bodies

For more information on how a partnership with CMI can enhance your student outcomes, visit [www.managers.org.uk/hepartners](http://www.managers.org.uk/hepartners)

## LEARNING ENVIRONMENT



CMI student membership benefits and curriculum enrichment activities can support TEF submissions.



CMI engagement activities enhance students' learning and career development.



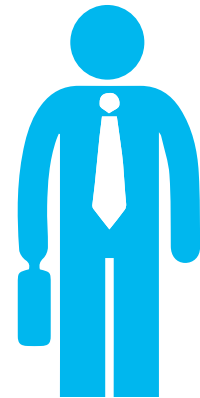
Our online resources enrich learning and drive above baseline TEF performance.

## STUDENT OUTCOMES AND LEARNING GAIN

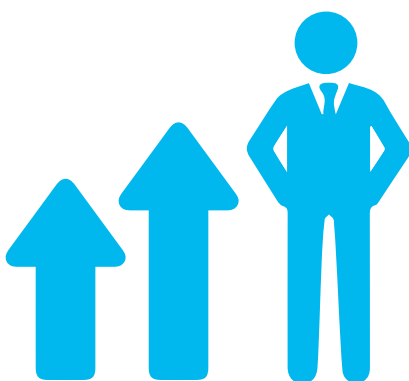


**9 out of 10**  
HE partners say that CMI has a high level of impact on student employability.

**56%**  
of students believe their CMI qualification will be highly valuable for career development.



**71%**  
of students say that engaging with CMI significantly improves their employability.



**41%**  
say they are likely to continue their professional development along the pathway to Chartered Manager status.

*"The partnership with CMI has helped prepare and equip students at Coventry University with the tools to approach the employer market with confidence."*

Patricia Rogers, Postgraduate Strategy Unit, Coventry University

For more information on how a partnership with CMI can enhance your student outcomes, visit [www.managers.org.uk/hepartners](http://www.managers.org.uk/hepartners)